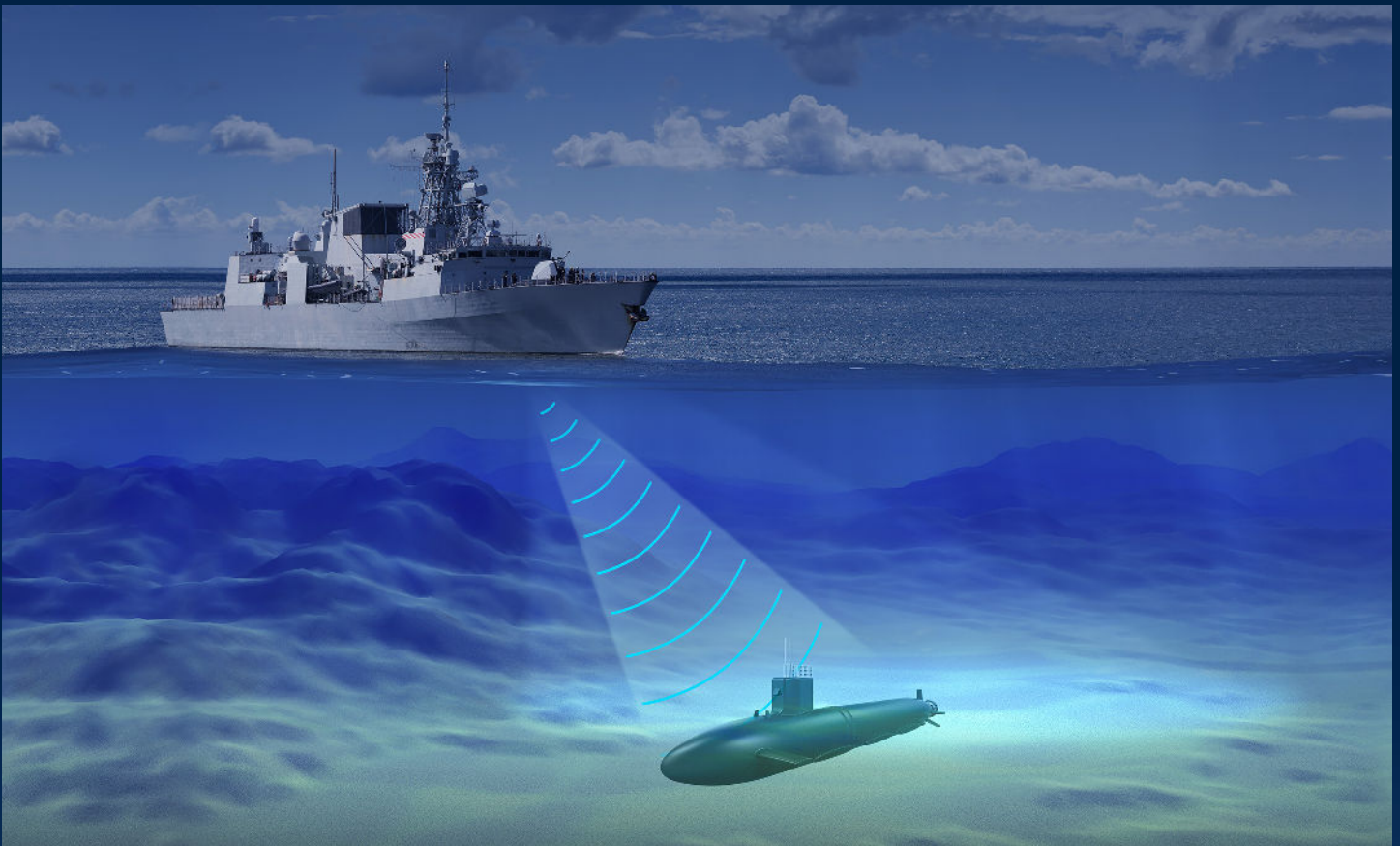


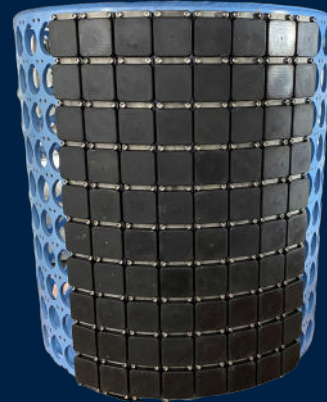
OVERVIEW

The Nautel 510 HMS is a high power, broadband hull mounted sonar sub-system, combining all the transmission chain components from amplifier to transducer array. Bringing together its world-renowned power amplification expertise and 50 years of Tonpitz transducer design, Nautel has created this compact, ease of maintenance design, to produce the reliability and high performance you require in the harshest conditions, delivering the power where you need it, when you need it.

The Nautel 510 HMS is perfect for both new build and ship mid-life sensor refits and is now installed on Royal Canadian Navy Frigates, as part of the Underwater Warfare Suite Upgrade (UWSU) programme.



the power to see



General Specifications

Transmit Frequency Band	5 kHz to 14 kHz
Receive Frequency Band	3 kHz to 16 kHz
Duty Cycle	20%
Input Power	440V, 3-ph, AC/ 115V 1-ph, AC
Amplifier Output Power	72 kW
Active Waveforms	CW, FM, HFM Combined CW and FM
Transducers	360
Array Height	1219mm
Array Diameter	1213mm
Array Weight	2760 kg
Amplifier Dimensions (mm)	2197 x 584 x 1033
Amplifier Weight	1252 kg

the **power** to see